

Hampstead MARKETPLACE SHOPPING CENTER

2315-E Hanover Pike, Hampstead, Maryland

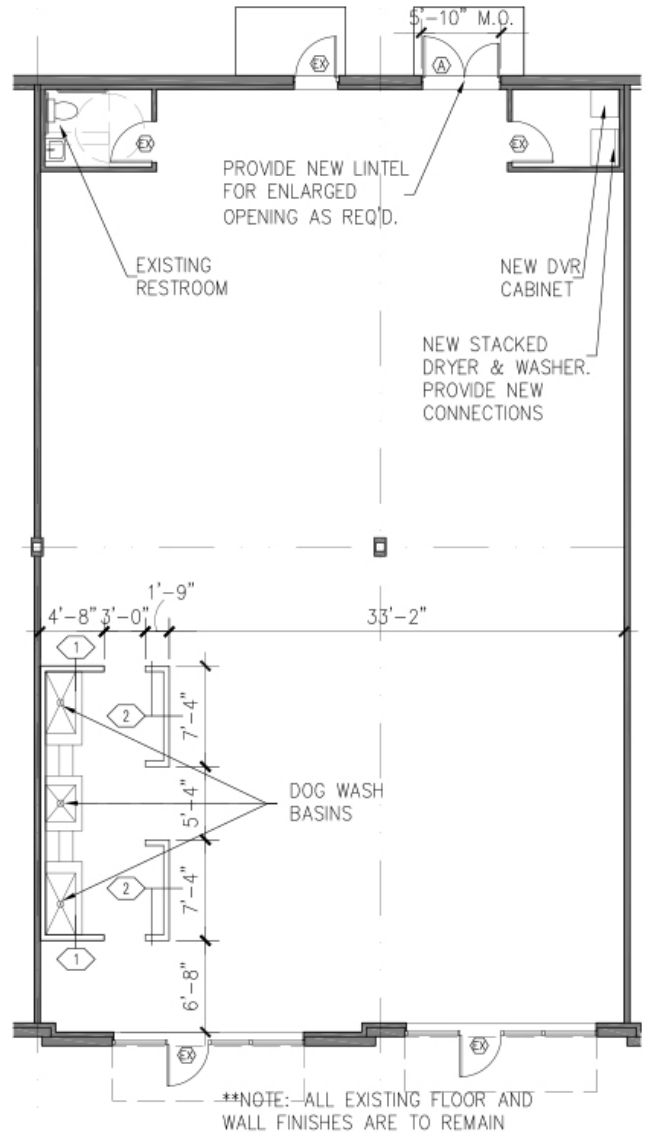


Former Pet Valu
3,039 SF (43'X70.67')
Gas heat



Features

- Open interior
- High end brown woodgrain vinyl plank throughout Premises
- Tankless hot water heater
- Dog washing stations
- Pylon Sign Panel



BROOKS & GOLDMAN
REALTY LLP

For leasing opportunities contact
Adam Kaftol at 410-484-6900
akaftol@brogol.com